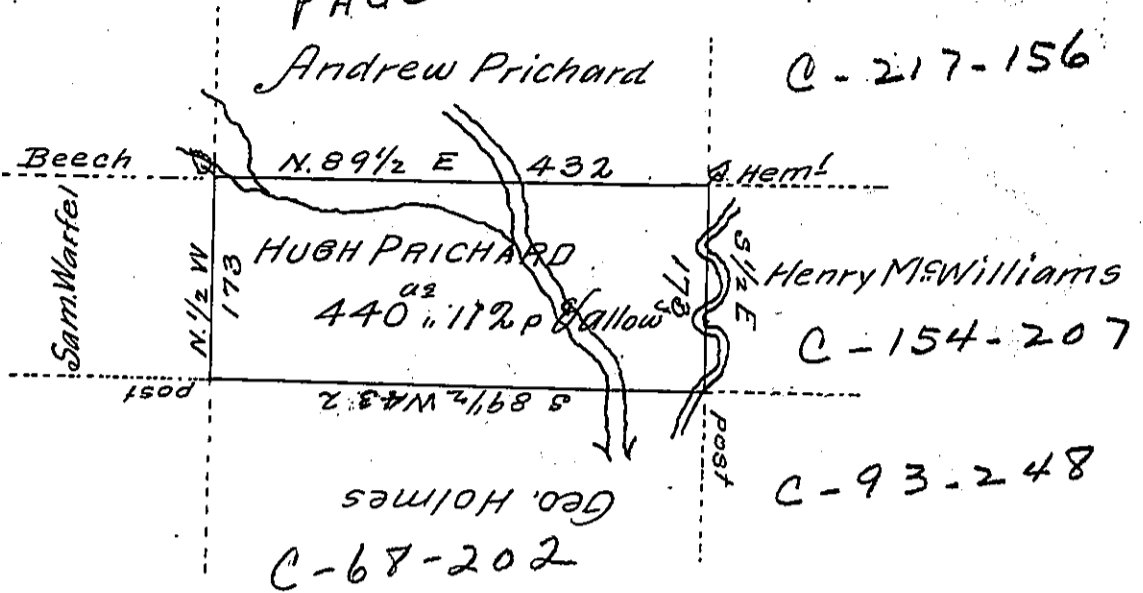


PAGE - 193

Andrew Prichard

C-217-156



C-154-207

C-93-248

C-68-202

A Draught of a Tract of land Called ——— situate in the County of Luzerne adjoining George Holmes & others, surveyed the 22nd day of Septem^r 1792 for Hugh Prichard, in pursuance of a Warrant bearing date the 3^d day of April 1792. Containing Four hundred forty acres & one hundred & twelve perch^s & the allowance of six p^r Cent &c.

Ant^y Crothers D.S.

To
 Dan^l Brodhead Esq^r
 Surveyor General

IN TESTIMONY that the above is a copy of the original remaining on file in the Department of Internal Affairs of Pennsylvania, made conformably to an Act of Assembly approved the 16th day of February, 1833, I have hereunto set my Hand and caused the Seal of said Department to be affixed at Harrisburg, this second day of August 1906

Isaac P. Brown
 Secretary of Internal Affairs.